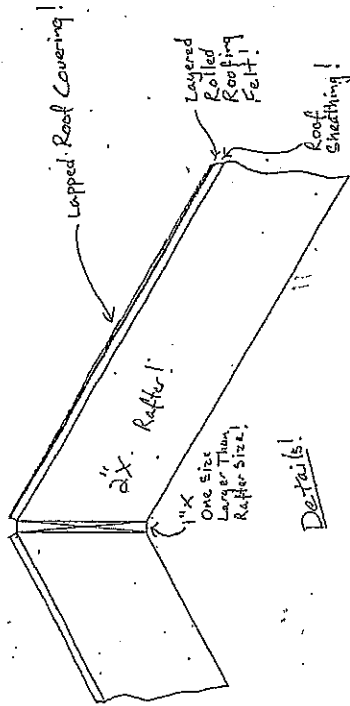
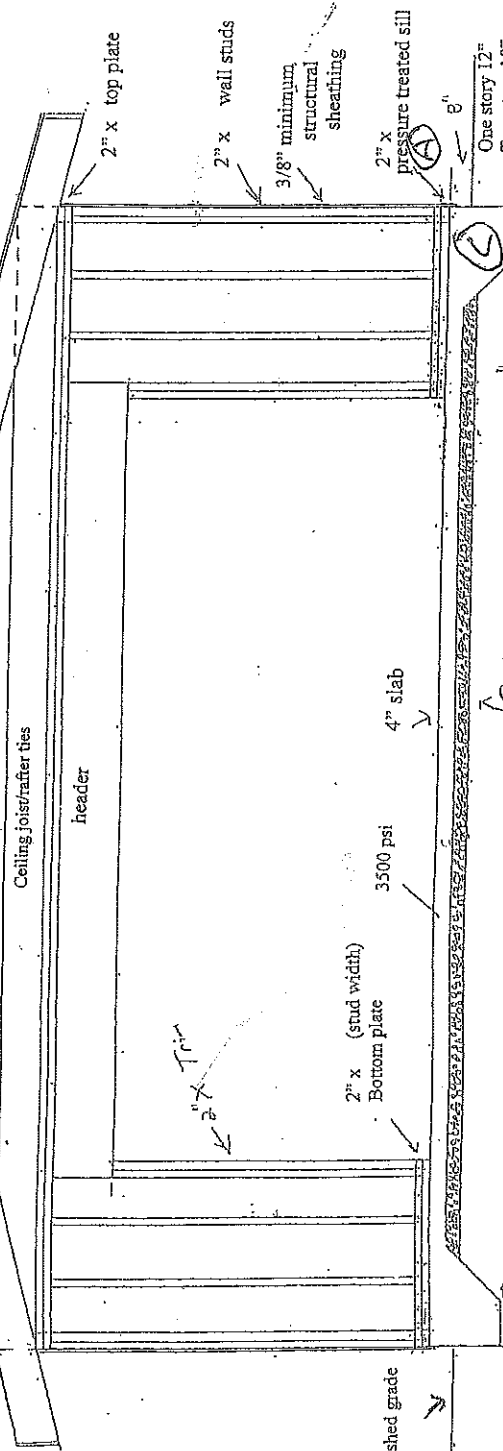


**Yamhill County Dept  
of Planning & Development**  
525 NE Fourth St  
McMinnville, OR 97128  
<http://www.co.yamhill.or.us/planning>



For engineered trusses provide truss diagrams @ framing inspection @  
1" x Ridge board  
2" x Rafters!  
Details!



(A) Pressure treated plate anchored with 1/2" x 10" bolts spaced a maximum of 6' on center. Minimum two bolts each piece, placed within 12" of the ends with 3" x 3" x 1/4" plate washers.

(B) cross section view  
4" compacted base material  
Undisturbed soil

(C) One story 12" Two story 13"

(C) Rebar requirements:  
Min 1 - #4 bar within top 12" of wall  
1 - #4 bar in footing 3" off the ground  
verticals 48" o.c.

Exceptions: monolithically poured foundations need only 2 - #4 bars in the footing

