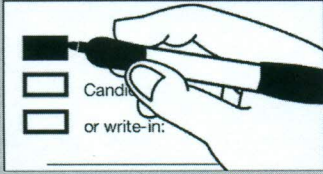


Official General Election McMinnville City Council Supplemental Ballot
Yamhill County, Oregon
November 04, 2014

Supplemental *PRE0015-1*

Instructions

Making Selections



Use a blue or black ink pen.

Fill in the box to the left of your choice. Fill in the box completely and do not make any marks outside of the box.

You do not have to vote in every race.

Do not cross out or erase, or your vote may not count. If you make a mistake or damage your ballot, call the County Elections Office at 503-434-7518 to ask for a replacement ballot.

WARNING: Any person who, by use of force or other means, unduly influences an elector to vote in any particular manner or to refrain from voting is subject to a fine.

City of McMinnville

**McMinnville City Council
Supplemental
Ballot**

This supplemental ballot replaces the portion of your original ballot for the office of McMinnville City Council.

**Supplemental Ballot
Voting Instructions:**

1. Do not vote for McMinnville City Councilor on your original ballot
2. You must use this ballot to vote for McMinnville City Councilor
3. Place only this ballot inside the secrecy envelope that came with this ballot
4. Place only this ballot and secrecy envelope inside the special blue return envelope marked "McMinnville City Council Supplemental Ballot"
5. Sign the blue return envelope
6. Return this ballot to any official drop site before 8 pm on Election night (November 4, 2014)

Keep this Supplemental Ballot and its blue return envelope separate from your original ballot.

- Return your original ballot in its envelope
- Return this supplement ballot in its envelope

Return both ballots at your earliest convenience.

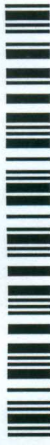
Please refer to the enclosed flyer and our website for more details.

www.co.yamhill.or.us/clerk

Start voting here

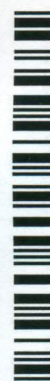
McMinnville City Councilor - Ward 1
Vote For One

- Kevin Jeffries
 James Galbreath
 Write-in:



10000020100035

100000122119



DRAFT

DRAFT

DRAFT

2273031265

