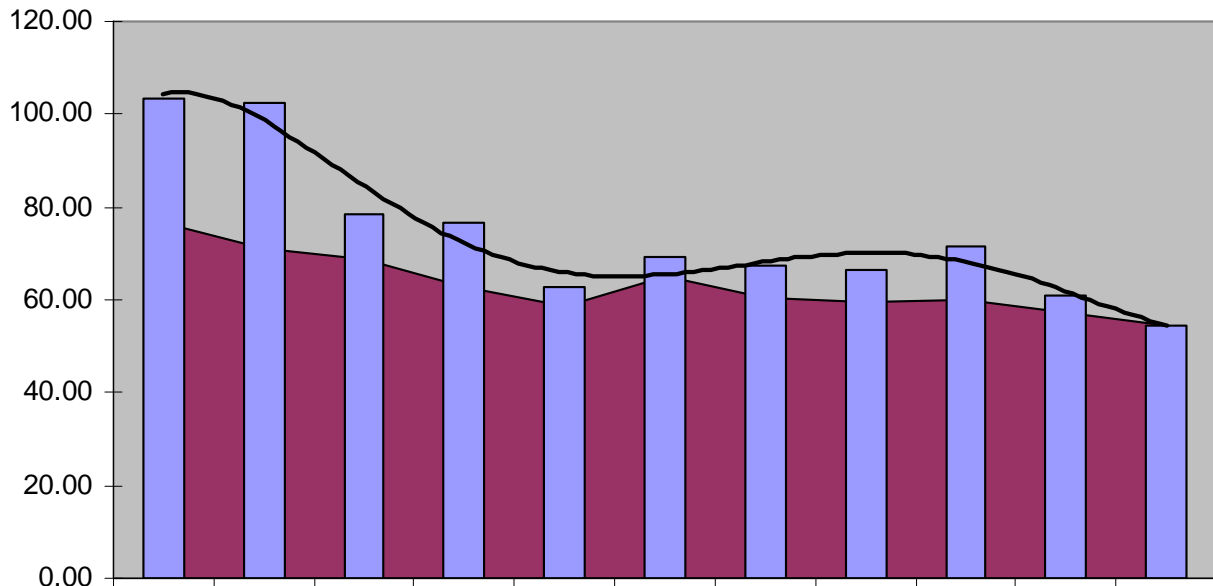
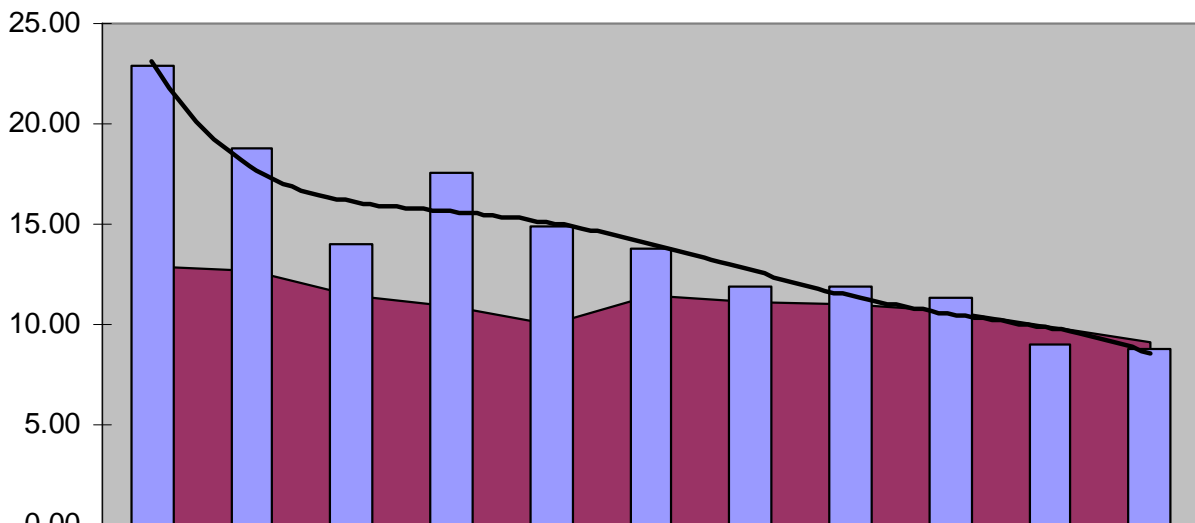


Total Crime Rate by Referral (per 1000 youth ages 10-17)



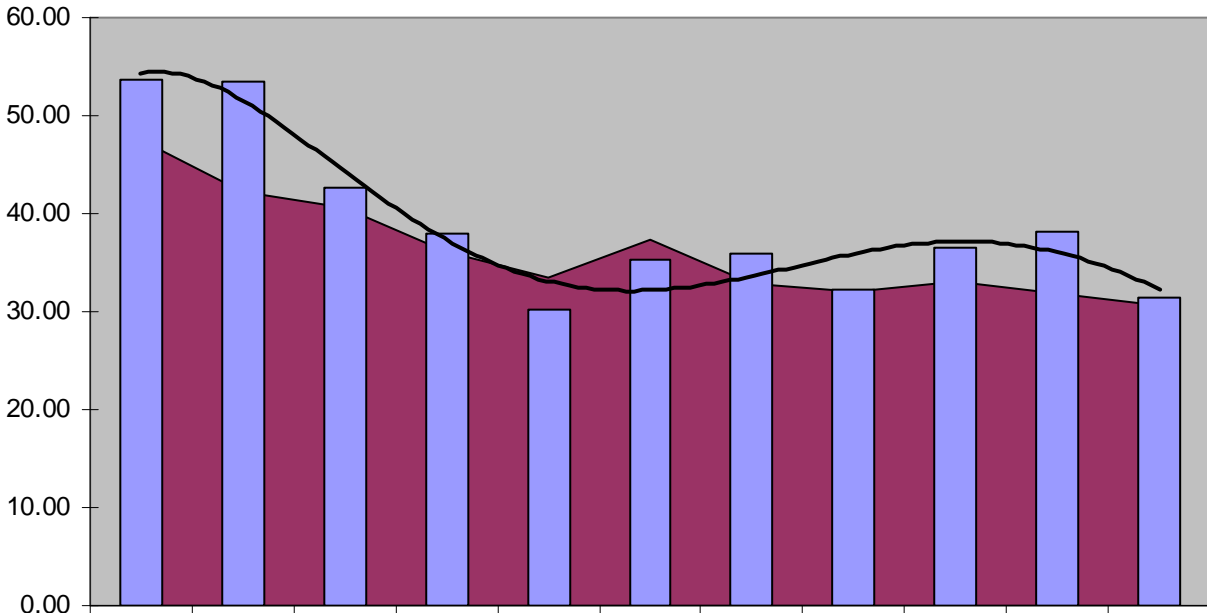
	1998	1999	2000	2001	2002	2003	2004	2005	2006	2007	2008
■ Oregon	76.63	71.24	68.82	62.86	58.45	65.00	60.41	59.64	59.97	57.40	54.67
■ Yamill	103.53	102.49	78.59	76.47	62.76	69.23	67.57	66.59	71.36	61.09	54.63

Person Crime Rate by Referral (per 1000 youth ages 10-17) (Examples: assaults, sex offenses)



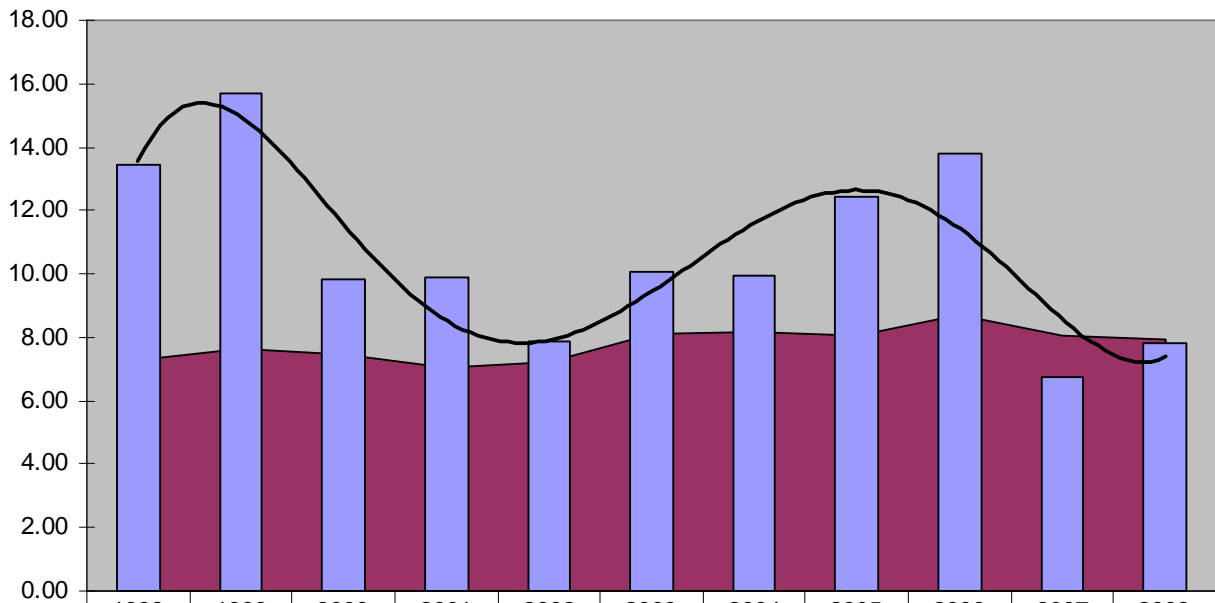
	1998	1999	2000	2001	2002	2003	2004	2005	2006	2007	2008
■ Oregon	12.85	12.69	11.46	10.91	10.03	11.42	11.10	11.01	10.67	9.90	9.07
■ Yamill	22.94	18.78	13.95	17.54	14.94	13.76	11.88	11.87	11.29	9.04	8.74

Property Crime Rate by Referral (per 1000 youth ages 10-17)
(Examples: Burglary, Criminal Mischief, Trespass, Theft)



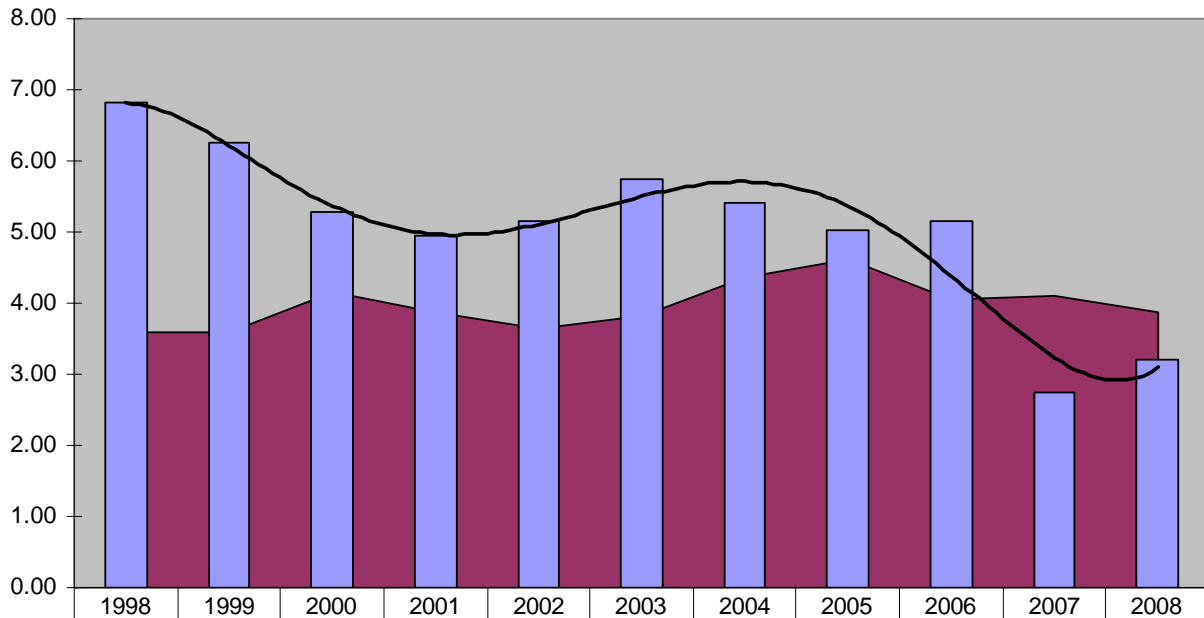
■ Oregon	47.49	42.15	40.52	36.18	33.53	37.44	32.81	32.09	33.02	31.78	30.57
■ Yamhill	53.72	53.42	42.67	37.97	30.25	35.25	35.82	32.33	36.51	38.21	31.50

Public Order Crime Rate by Referral (per 1000 youth ages 10-17)
(Examples: Disorderly Conduct, Harassment, Weapon possession)

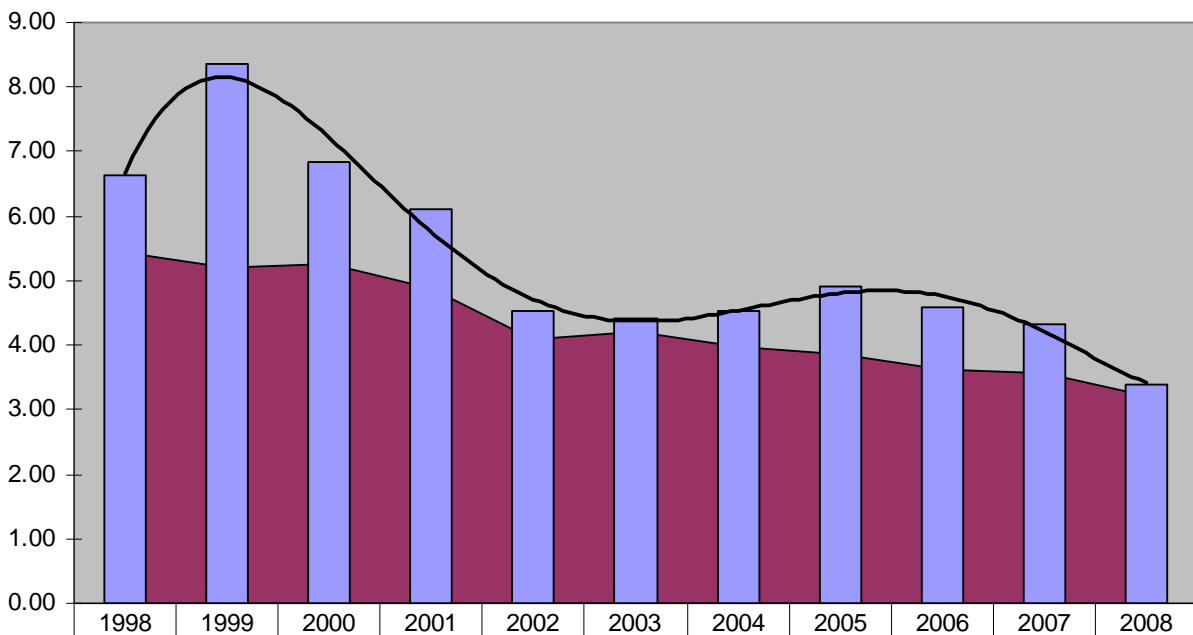


■ Oregon	7.26	7.63	7.44	7.04	7.22	8.10	8.16	8.06	8.68	8.06	7.96
■ Yamhill	13.43	15.69	9.85	9.90	7.88	10.07	9.93	12.45	13.82	6.78	7.80

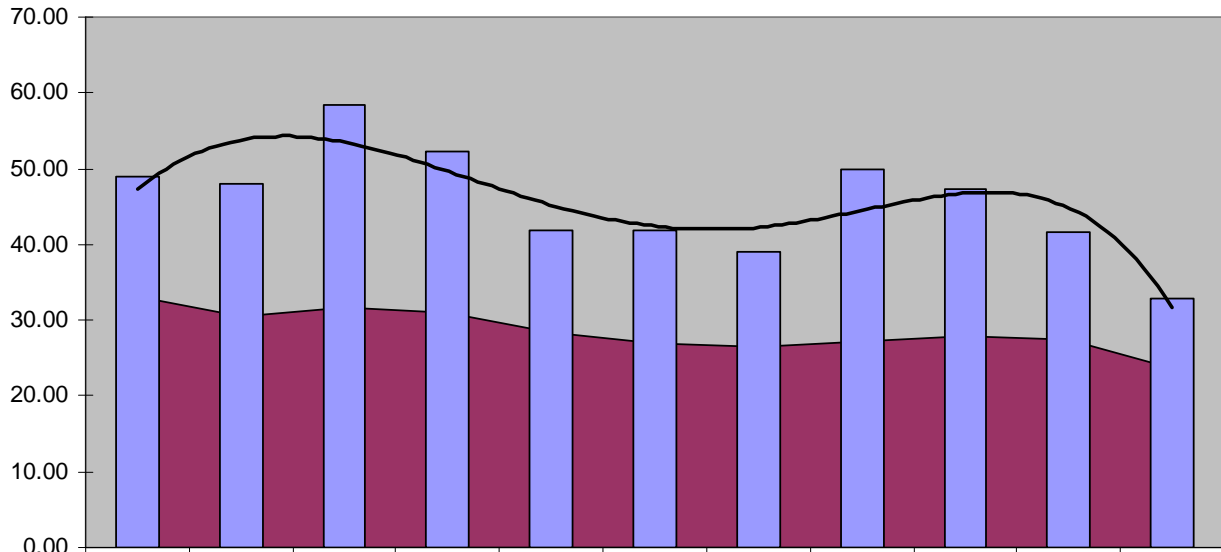
Drug & Alcohol Crime Rate by Referral (per 1000 youth ages 10-17)
 (Examples: Possession of Controlled Substance, Furnishing Alcohol to Minor)



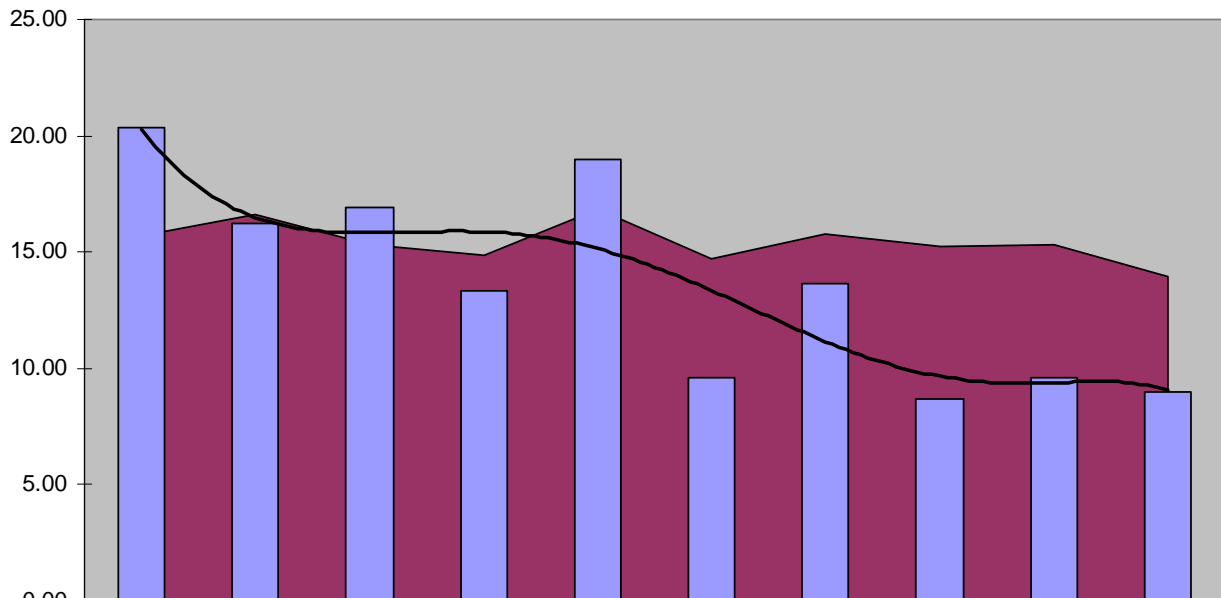
Other Crimes Rate by Referral (per 1000 youth ages 10-17)
 (Examples: DUII, False Information, Failure to Appear, Contempt)



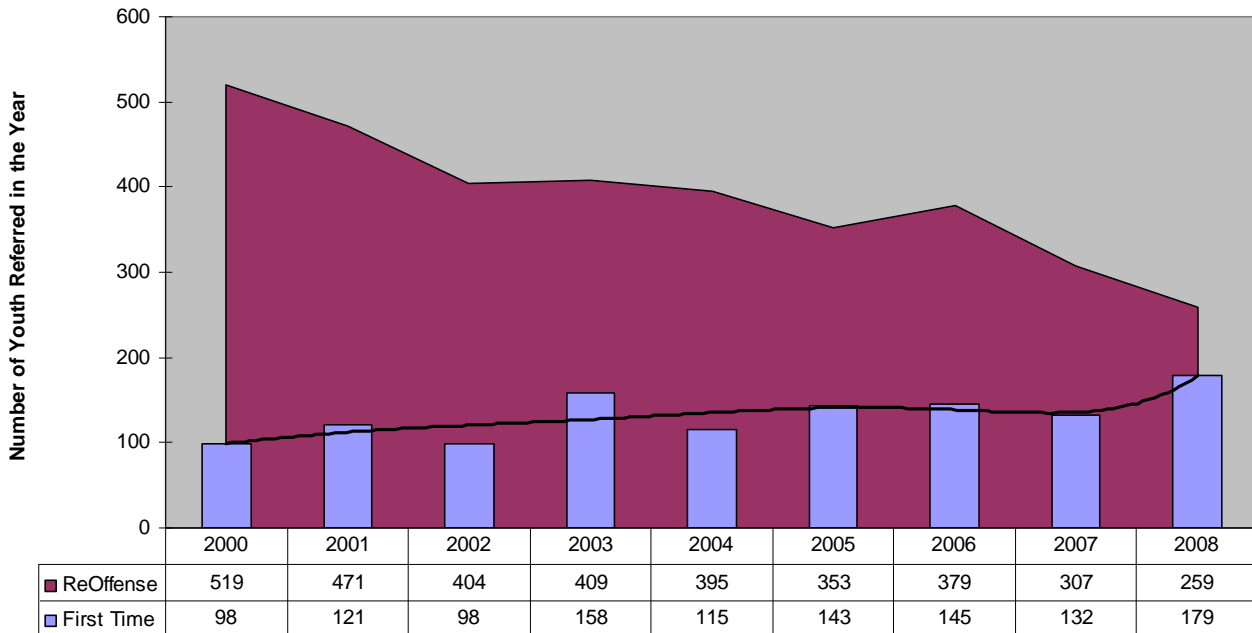
Status Offense Rate by Referral (per 1000 youth ages 10-17)
 (Examples: Curfew, MIP-Alcohol, MIP-Tobacco, Less than Oz. Marijuana)



Runaway Report Rate by Referral (per 1000 youth ages 10-17)



**Yamhill Juvenile Crime Referral Comparison
First Time vs. ReOffense
(by unduplicated count of youth for crimes only)**



**Chronic Offending Rate Comparison
Yamhill and State
(3 or more criminal referrals in a 12-month period)**

