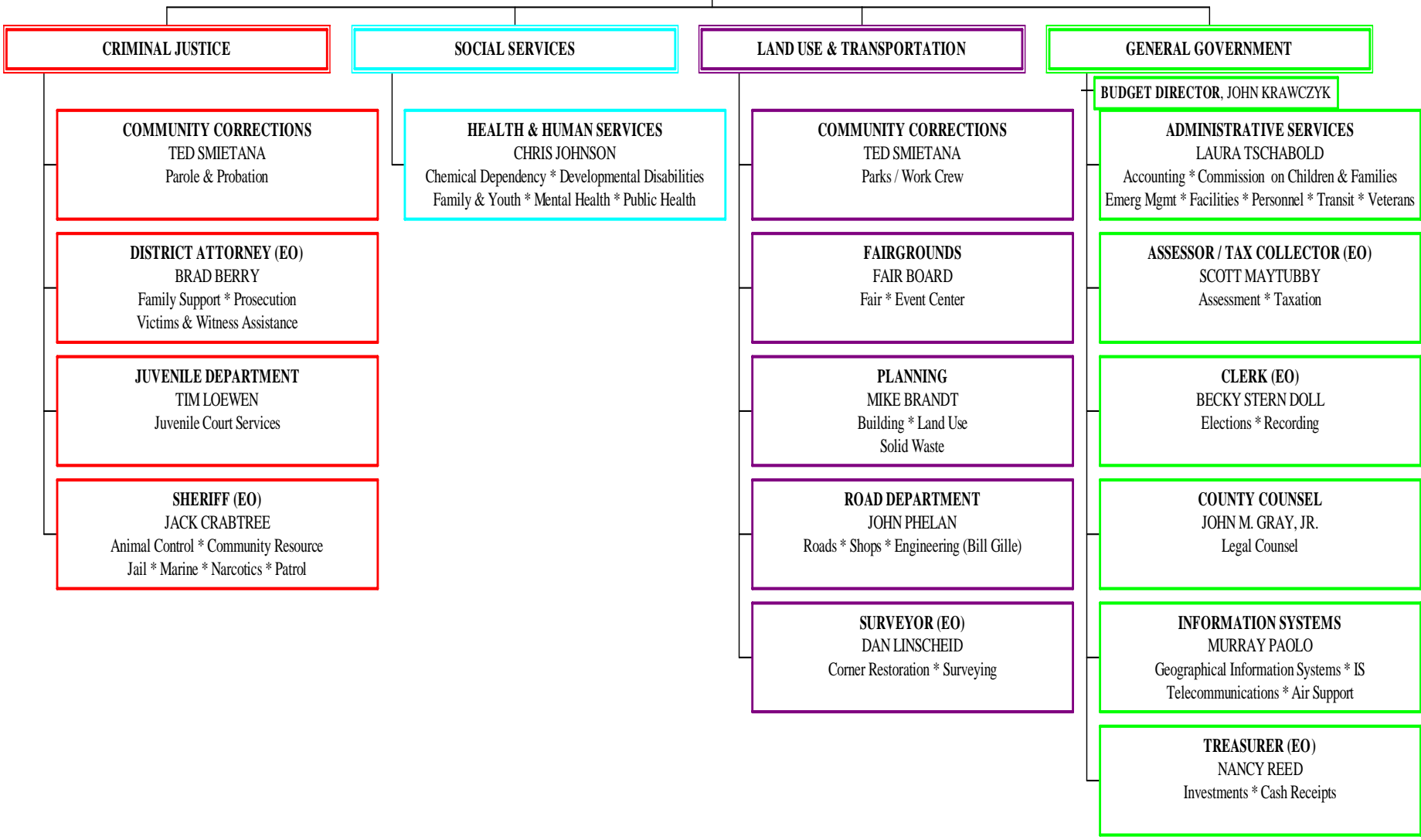


# YAMHILL COUNTY PROGRAM & FUNCTIONAL ORGANIZATION

**COUNTY COMMISSIONERS (EO)**  
KATHY GEORGE \* LESLIE LEWIS \* MARY STERN



**CRIMINAL JUSTICE**

**COMMUNITY CORRECTIONS**  
TED SMJETANA  
Parole & Probation

**DISTRICT ATTORNEY (EO)**  
BRAD BERRY  
Family Support \* Prosecution  
Victims & Witness Assistance

**JUVENILE DEPARTMENT**  
TIM LOEWEN  
Juvenile Court Services

**SHERIFF (EO)**  
JACK CRABTREE  
Animal Control \* Community Resource  
Jail \* Marine \* Narcotics \* Patrol

**SOCIAL SERVICES**

**HEALTH & HUMAN SERVICES**  
CHRIS JOHNSON  
Chemical Dependency \* Developmental Disabilities  
Family & Youth \* Mental Health \* Public Health

**LAND USE & TRANSPORTATION**

**COMMUNITY CORRECTIONS**  
TED SMJETANA  
Parks / Work Crew

**FAIRGROUNDS**  
FAIR BOARD  
Fair \* Event Center

**PLANNING**  
MIKE BRANDT  
Building \* Land Use  
Solid Waste

**ROAD DEPARTMENT**  
JOHN PHELAN  
Roads \* Shops \* Engineering (Bill Gille)

**SURVEYOR (EO)**  
DAN LINSCHIED  
Corner Restoration \* Surveying

**GENERAL GOVERNMENT**

**BUDGET DIRECTOR, JOHN KRAWCZYK**

**ADMINISTRATIVE SERVICES**  
LAURA TSCHABOLD  
Accounting \* Commission on Children & Families  
Emerg Mgmt \* Facilities \* Personnel \* Transit \* Veterans

**ASSESSOR / TAX COLLECTOR (EO)**  
SCOTT MAYTUBBY  
Assessment \* Taxation

**CLERK (EO)**  
BECKY STERN DOLL  
Elections \* Recording

**COUNTY COUNSEL**  
JOHN M. GRAY, JR.  
Legal Counsel

**INFORMATION SYSTEMS**  
MURRAY PAOLO  
Geographical Information Systems \* IS  
Telecommunications \* Air Support

**TREASURER (EO)**  
NANCY REED  
Investments \* Cash Receipts